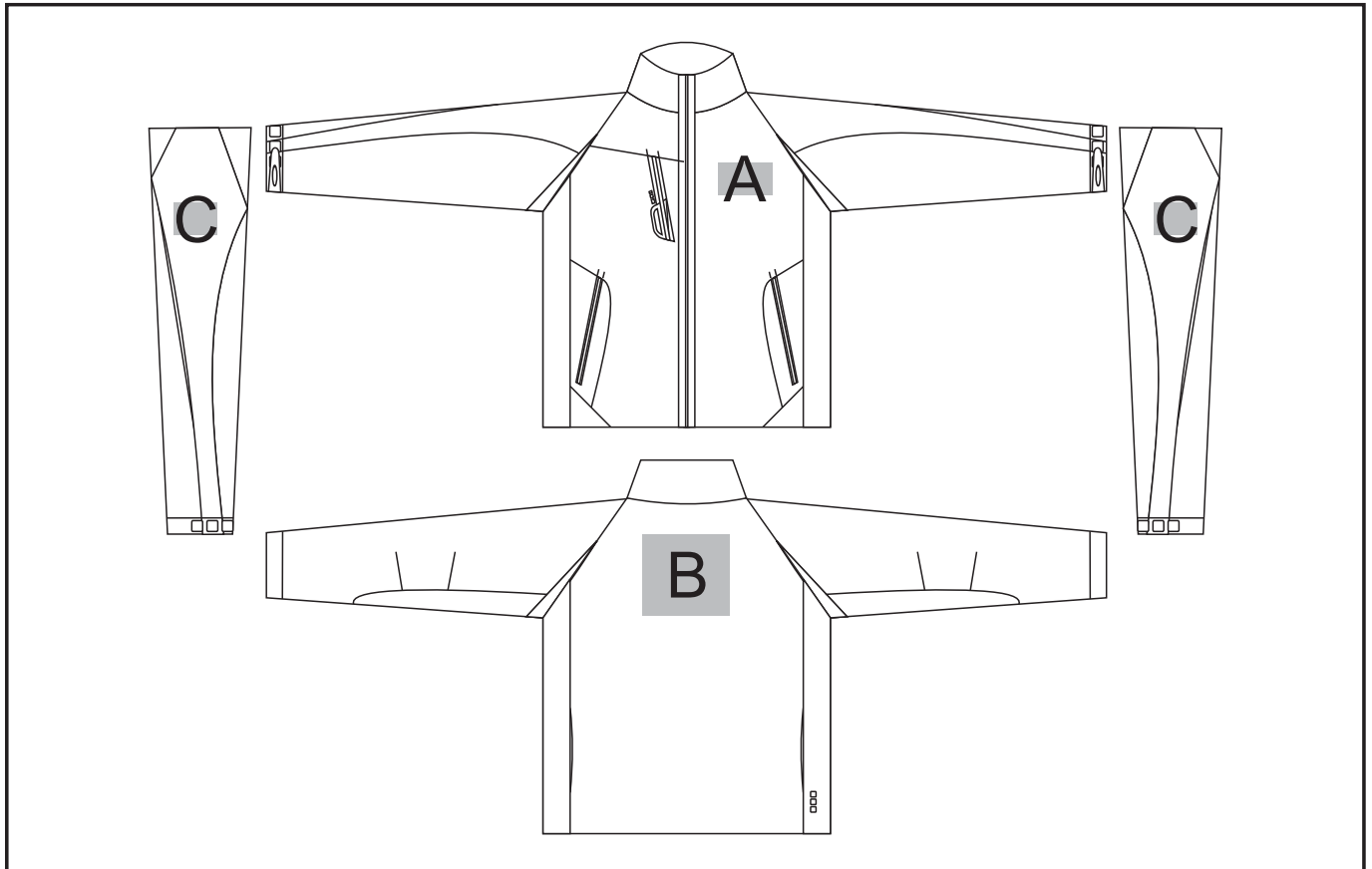


ELE-4021

Katavi Softshell Jacket - LADIES



Need to know:

- Cannot guarantee a 100% straight branding on any clothing item with check or stripe detail.

Branding Options:

Position A

1. Embroidery (EMB) - 9 colours
Size: 100mm diameter
2. Screen Print (SC) - 6 colours
Size: 100mm wide x 60mm high
3. Deboss (BOS)
Size: 100mm wide x 60mm high
4. Digital Transfer Clothing (DTC) - Full colour
Size: 100mm wide x 100mm high

Position B

1. Embroidery (EMB) - 9 colours
Size: 160mm wide x 150mm high
2. Screen Print (SC) - 6 colours
Size: 160mm wide x 150mm high
3. Deboss (BOS)
Size: 150mm wide x 60mm high
4. Digital Transfer Clothing (DTC) - Full colour
Size: 210mm wide x 148mm high

Position C

1. Embroidery (EMB) - 9 colours
Size: 50mm diameter
2. Screen Print (SC) - 6 colours
Size: 60mm wide x 60mm high
3. Deboss (BOS)
Size: 90mm wide x 60mm high
4. Digital Transfer Clothing (DTC) - Full colour
Size: 50mm wide x 50mm high